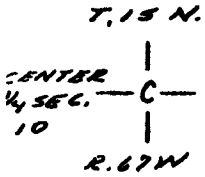


RECEIVED
LARAMIE COUNTY
CHEYENNE, WY.

'86 OCT 14 AM 11 51

CERTIFIED LAND CORNER RECORDATION

DESCRIPTION OF CORNER EVIDENCE FOUND, AND ORIGINAL RECORD (if known)

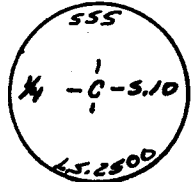
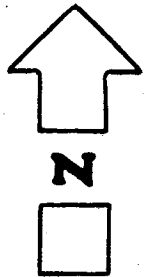
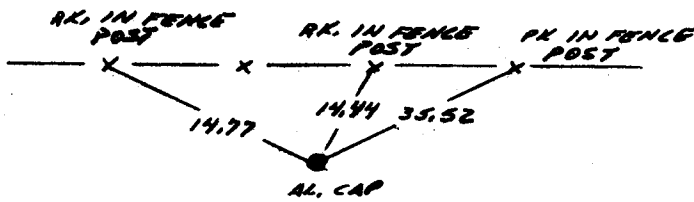


SET: 1/2" x 18" REBAR WITH ALUMINUM CAP PROJECTING 0.2 FEET ABOVE GROUND AND STAMPED AS SHOWN BELOW. MONUMENT LIES 4 FEET SOUTH OF EAST-WEST FENCE LINE.

DESCRIPTION OF MONUMENT AND ACCESSORIES ESTABLISHED TO PERPETUATE THE ORIGINAL LOCATION OF THIS CORNER:

SEE TIES BELOW

SKETCH, WITH COURSE AND DISTANCE TO ADJACENT CORNER IF DETERMINED IN THIS SURVEY. (May Sketch or Paste Reproduction on Reverse Side.)



I, TOM A. STEIL certify that I have carefully performed or reviewed the work done on the diagrammed corner as reported on this recordation form and approve the same.

Tom A. Steil
Signature of Surveyor

15-2500
Registration No.

STATE OF WYOMING,
Office of Clerk and Recorder,
County of Laramie

This "corner record" was filed for record on the 14 day of Oct, 1986, was noted on the cross-index plat and is assigned page No. _____, in book No. _____

Jack C. Whitcomb
County Official

Cross Index No. <u>6-15</u>	T. <u>15</u>	R. <u>67</u>	Mer.
_____	T. _____	R. _____	Mer.
_____	T. _____	R. _____	Mer.
_____	T. _____	R. _____	Mer.
_____	T. _____	R. _____	Mer.
_____	T. _____	R. _____	Mer.
_____	T. _____	R. _____	Mer.